

The South Carolina Economy in the Long Run: 1840-2004

Robert Tamura

Clemson University
&
Federal Reserve Bank of Atlanta

The views presented here do not represent those of the Federal Reserve Bank of Atlanta.

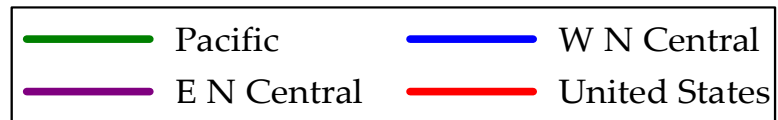
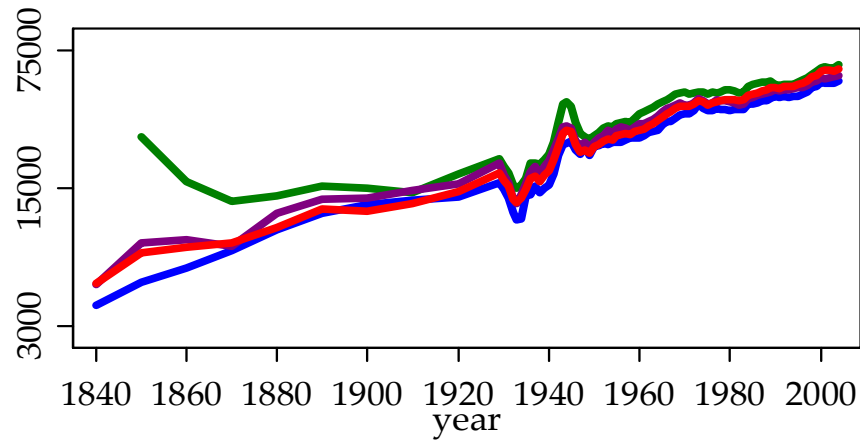
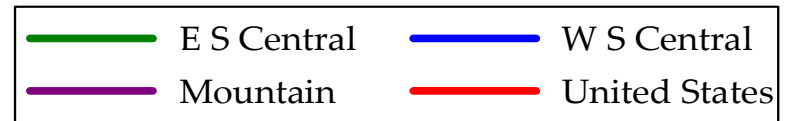
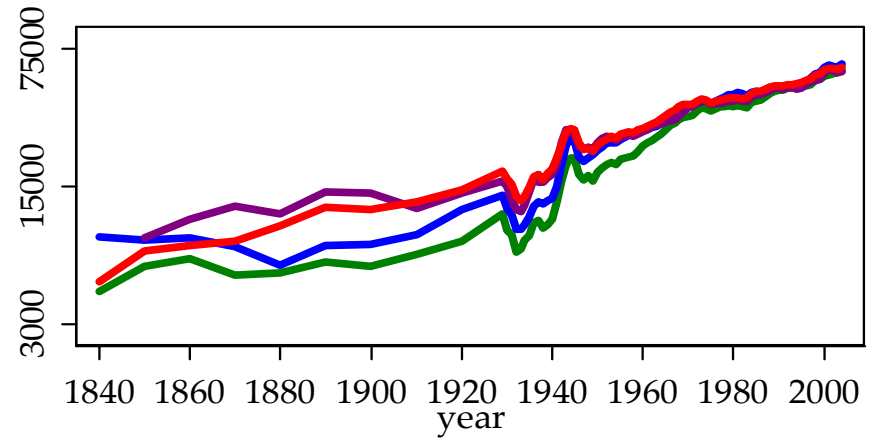
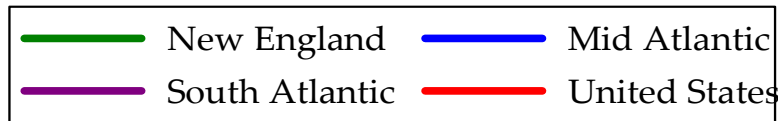
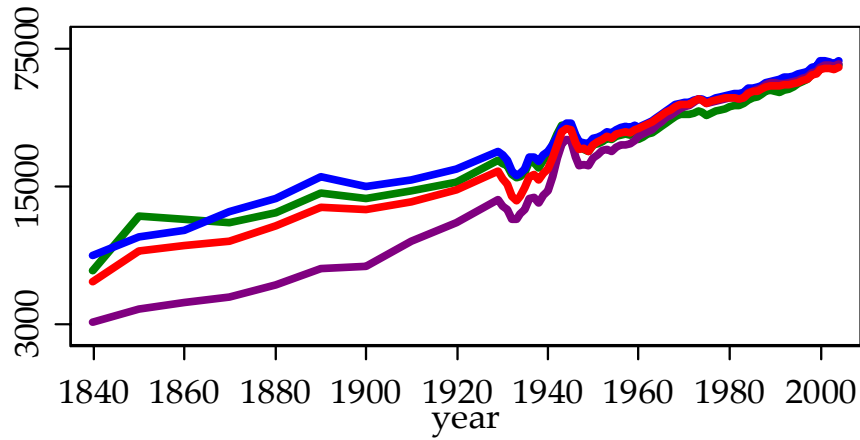


Figure 1: Real Output Per Worker, 1840-2004

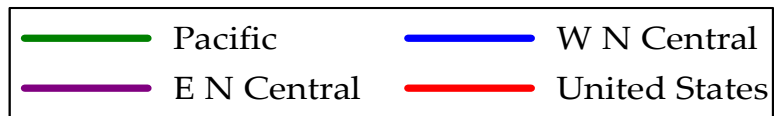
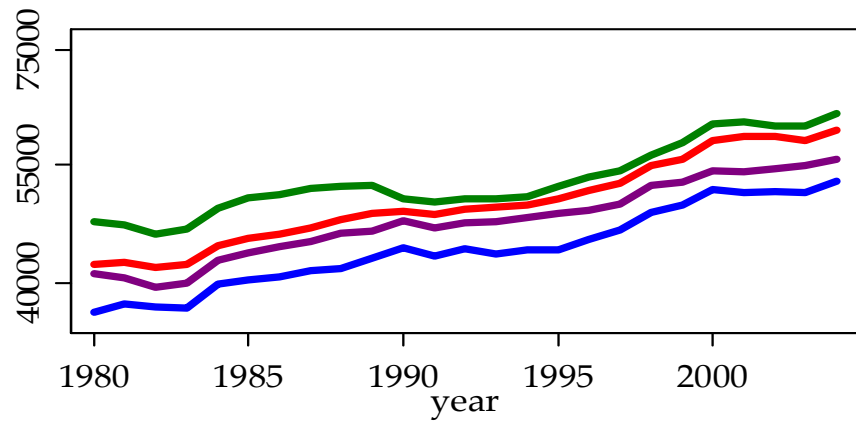
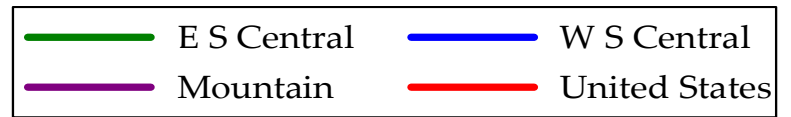
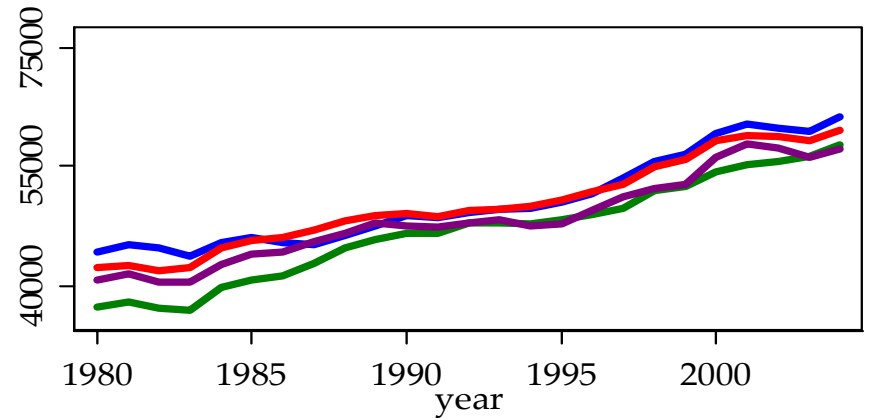
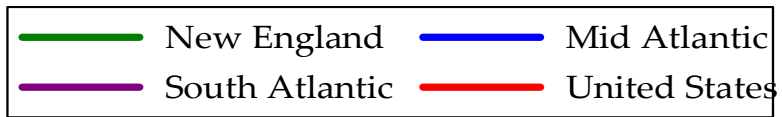
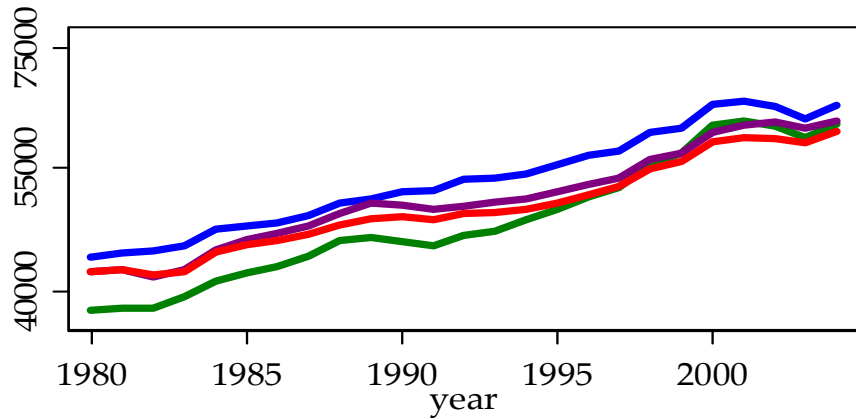


Figure 2: Real Output Per Worker, 1980-2004

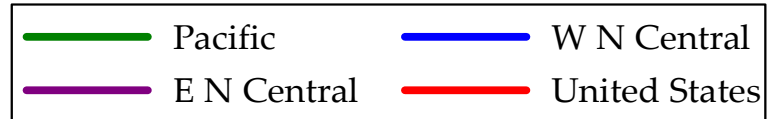
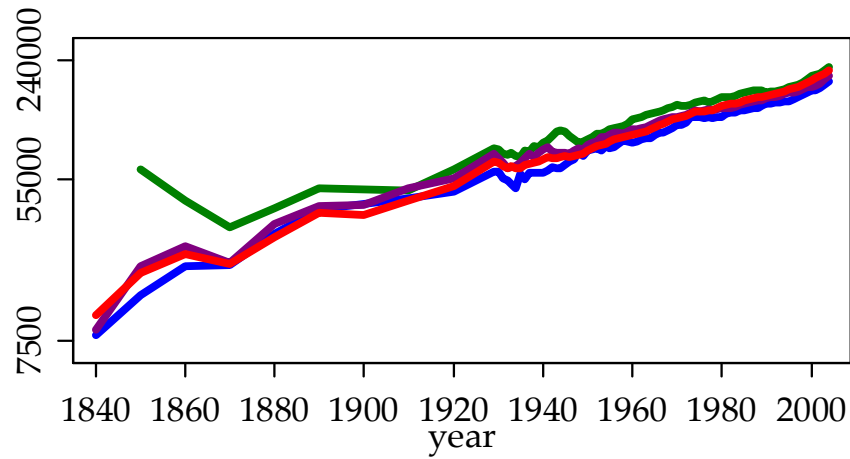
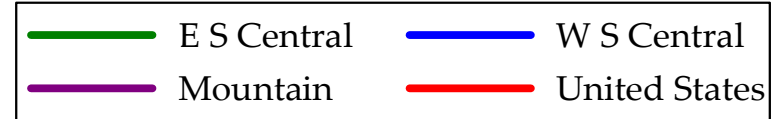
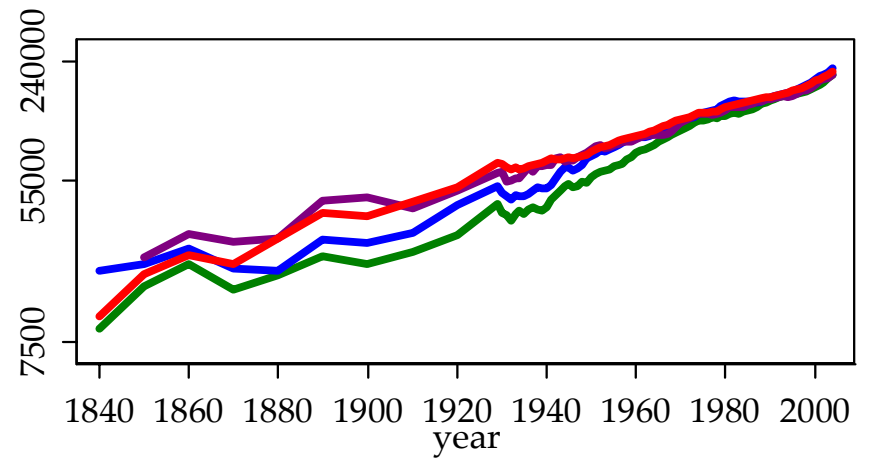
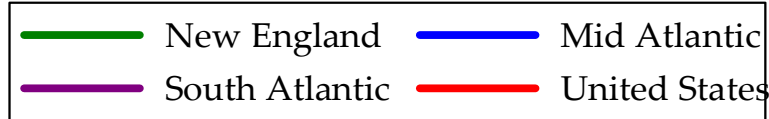
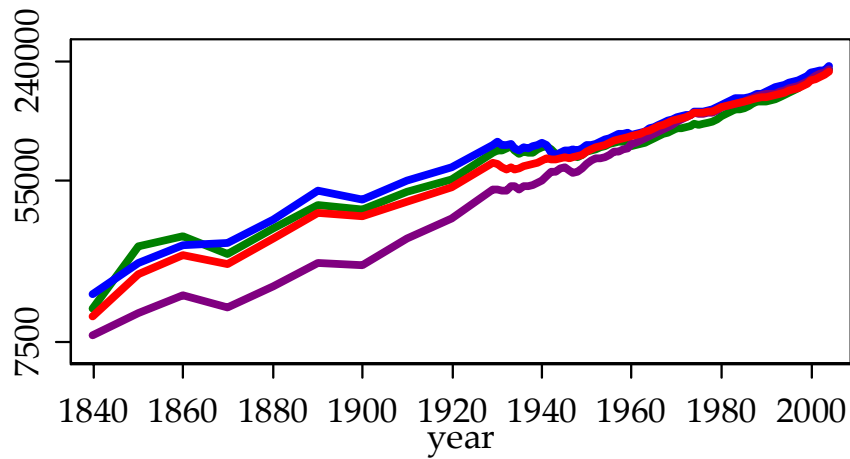


Figure 3: Physical Capital Per Worker, 1840-2004

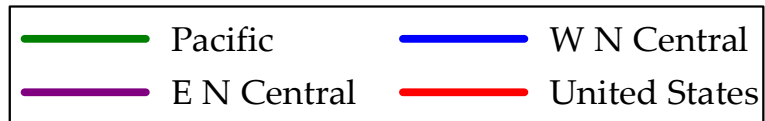
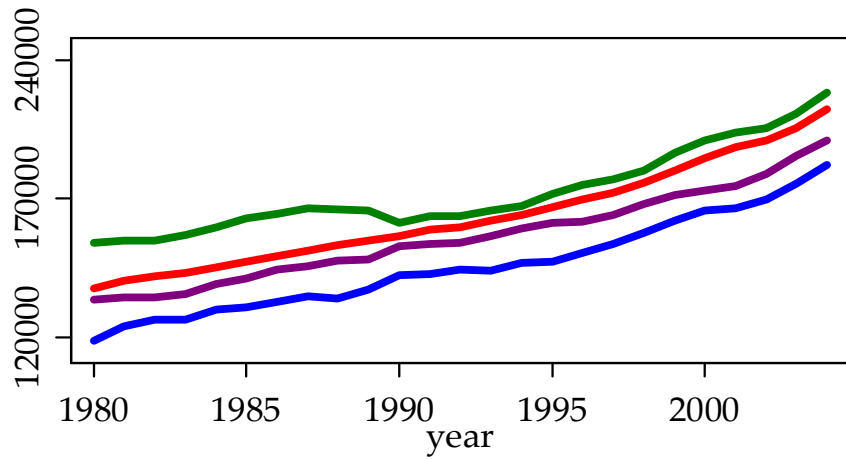
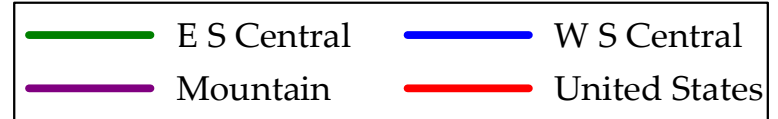
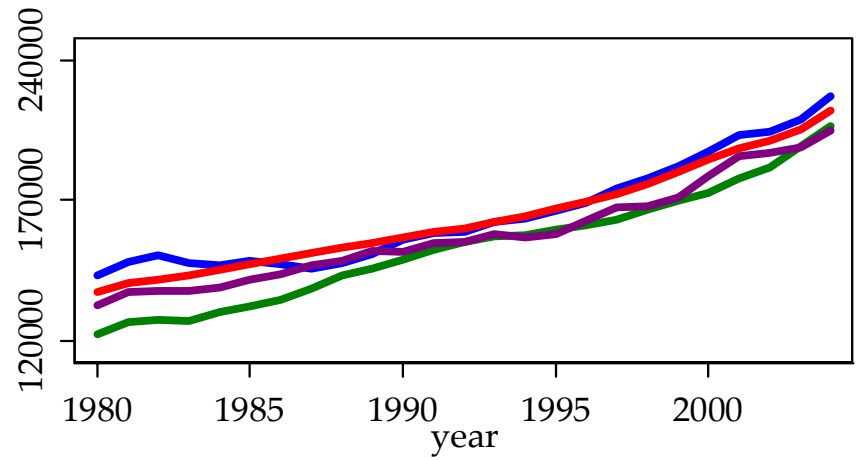
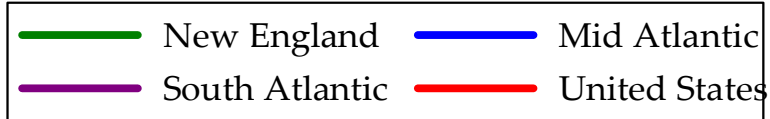
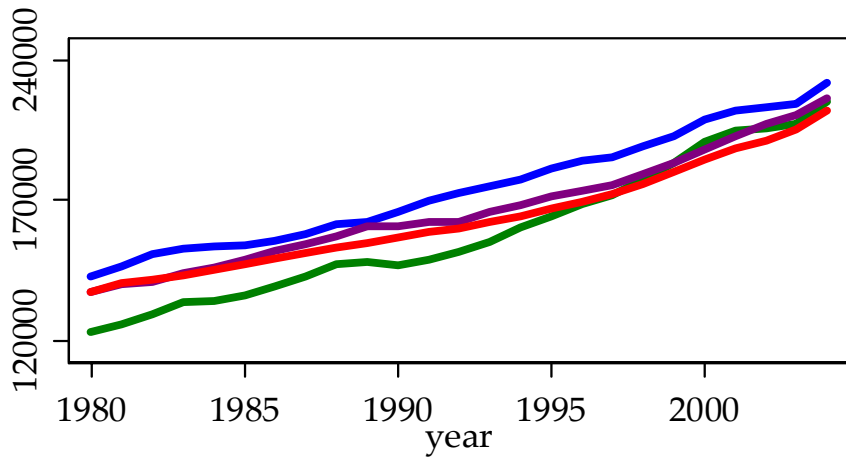


Figure 4: Physical Capital Per Worker, 1980-2004

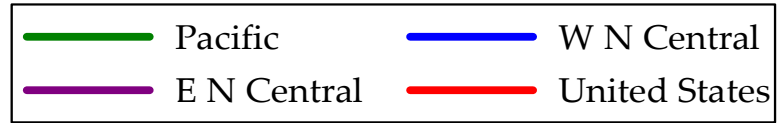
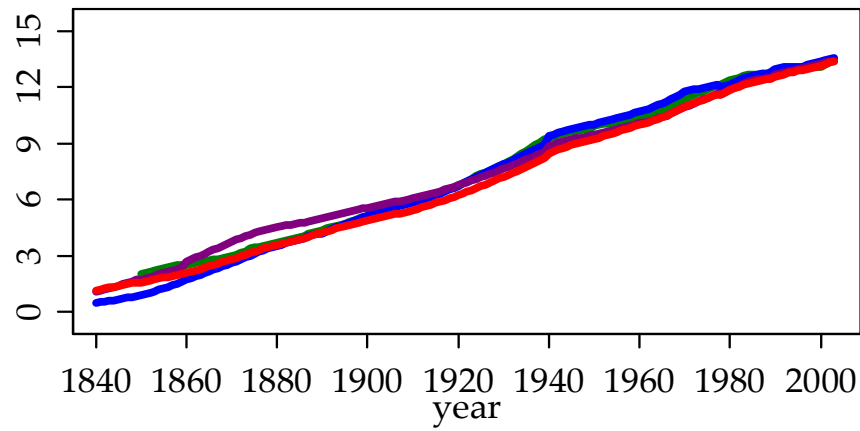
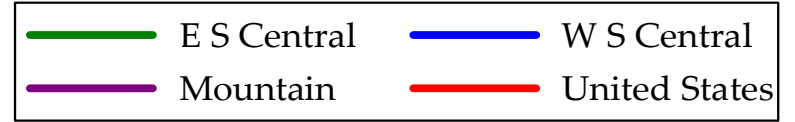
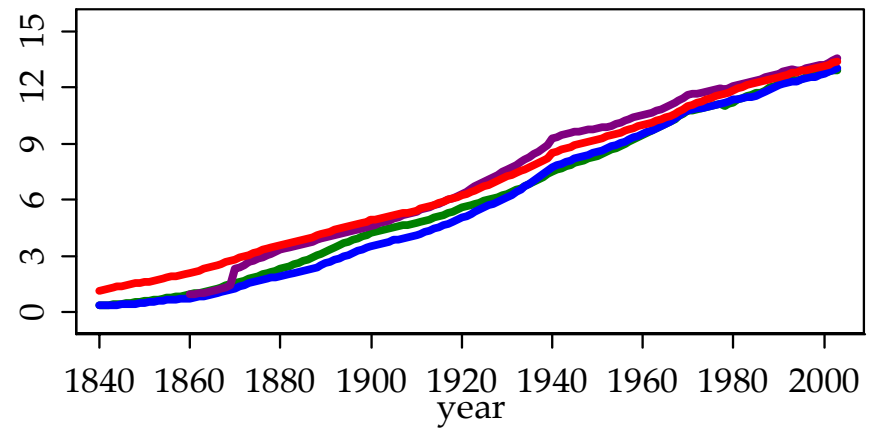
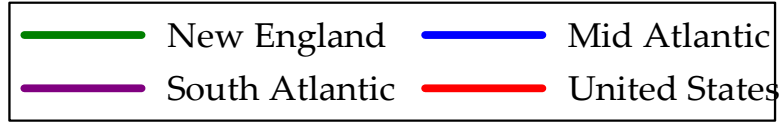
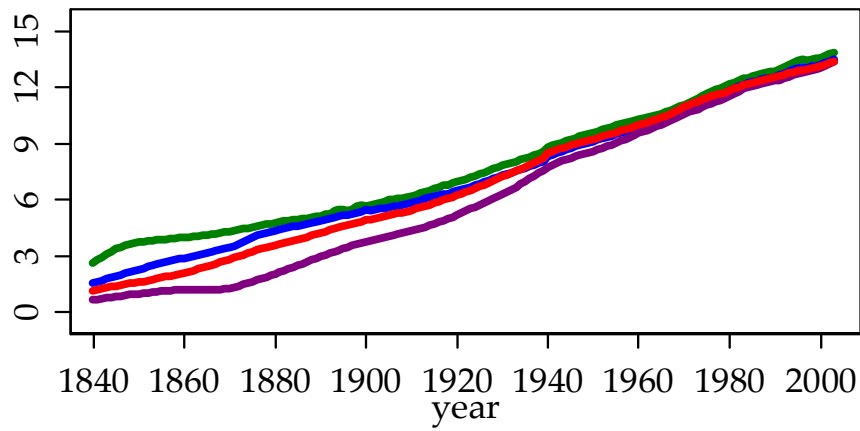


Figure 5: Years of Schooling, 1840-2003

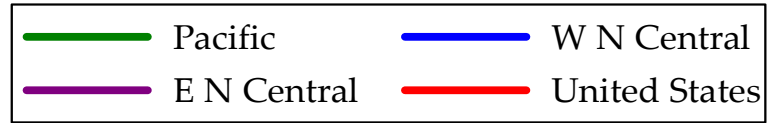
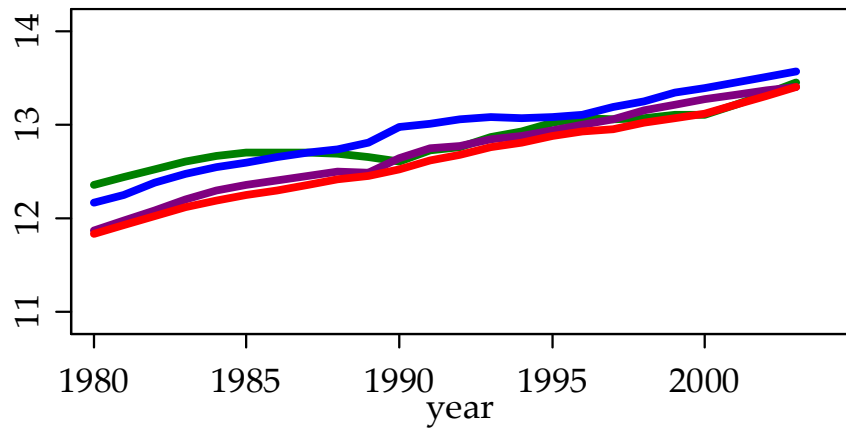
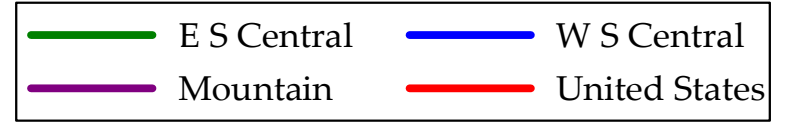
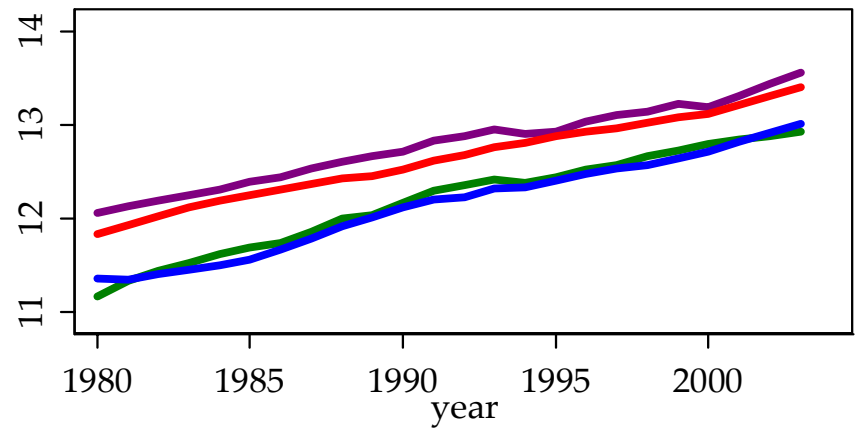
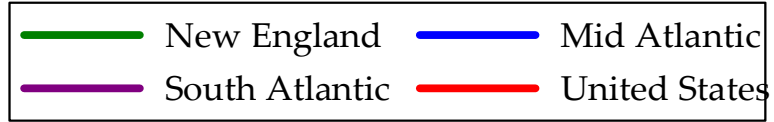
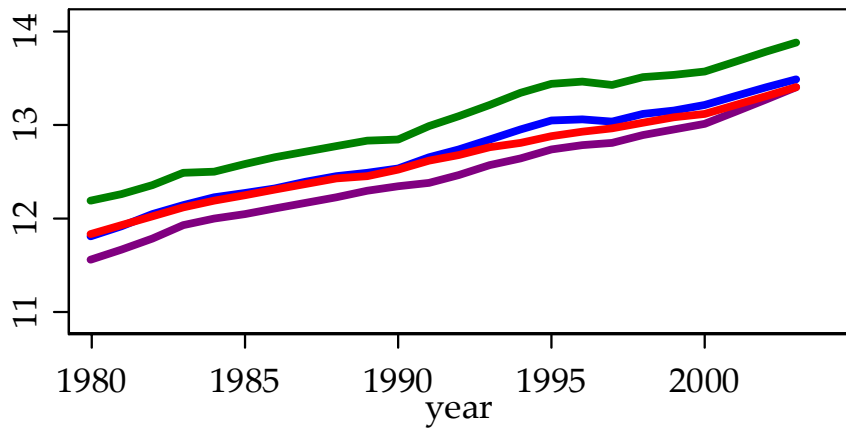


Figure 6: Years of Schooling, 1980-2003

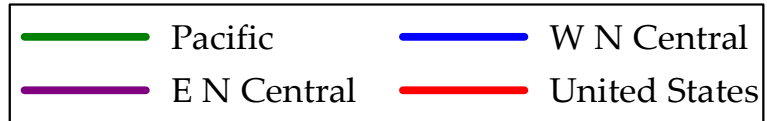
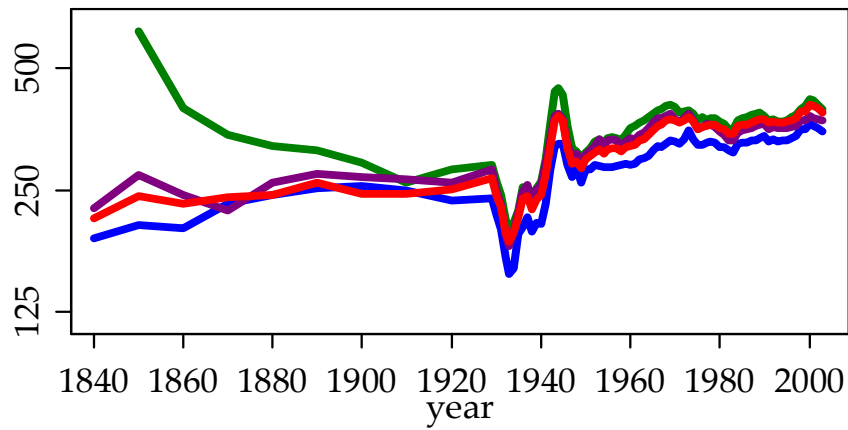
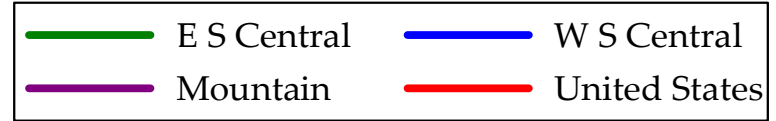
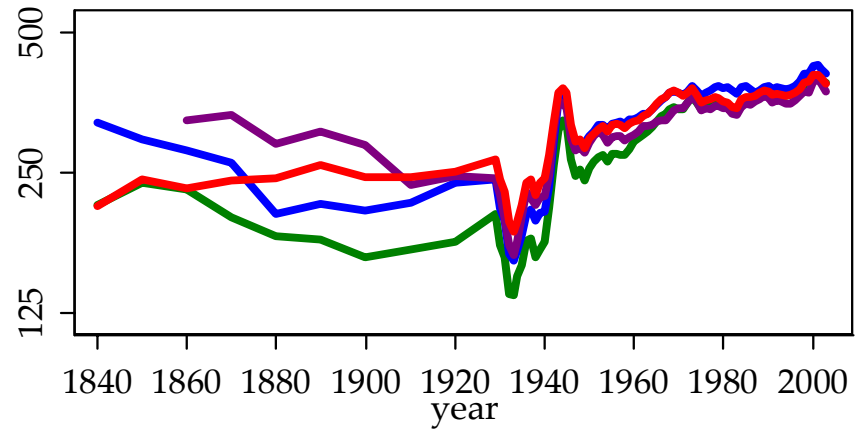
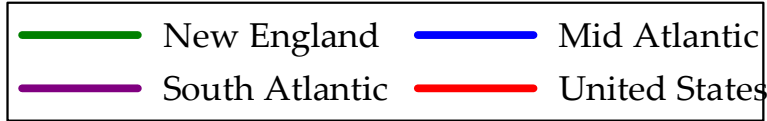
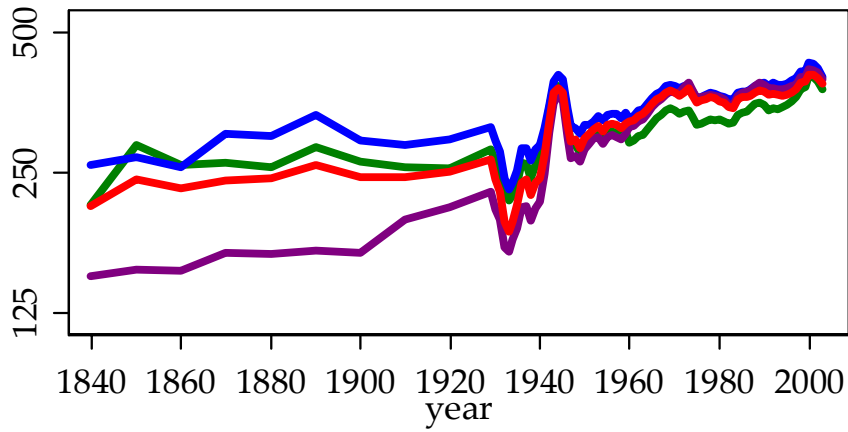


Figure 7: Total Factor Productivity: 1840-2003

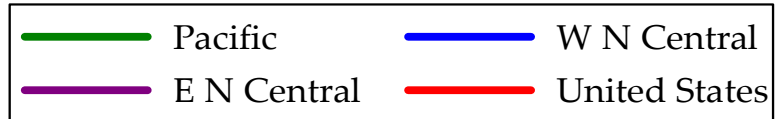
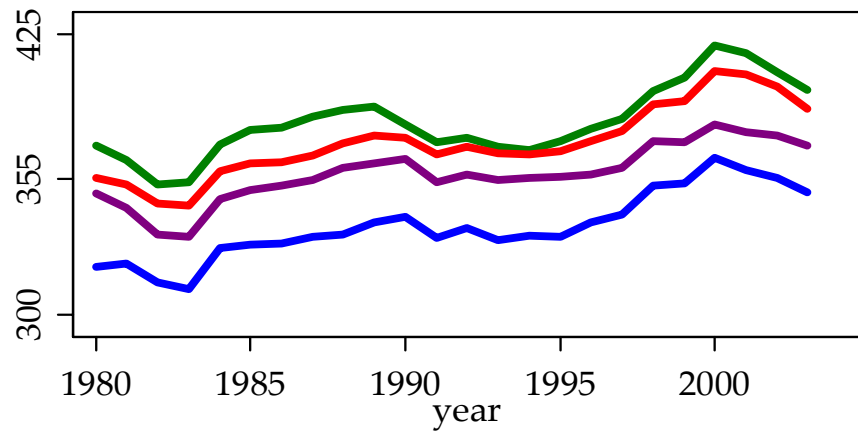
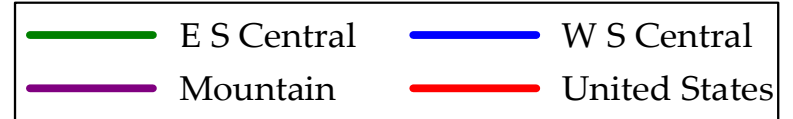
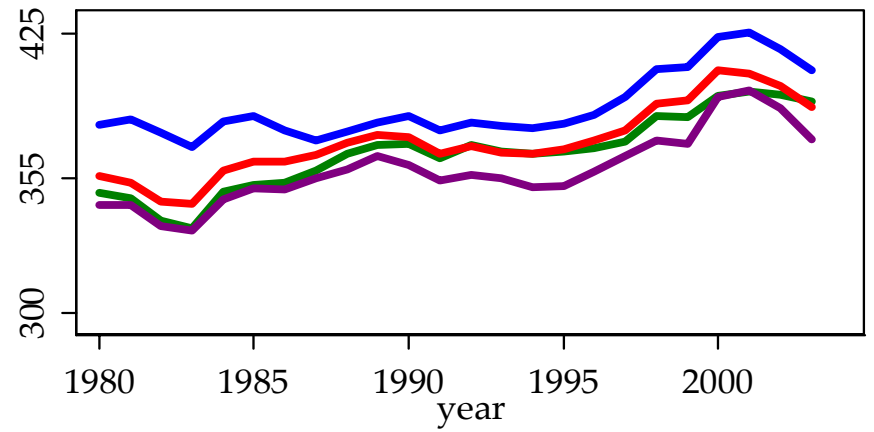
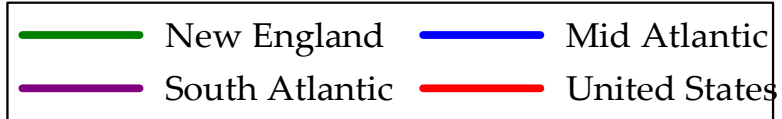
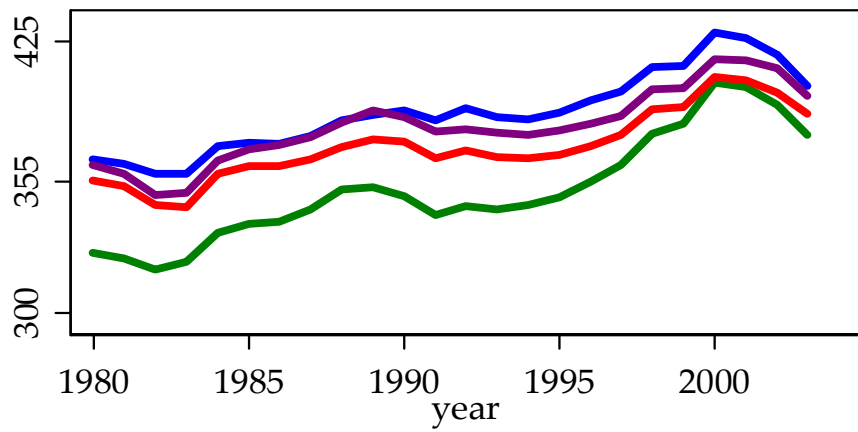


Figure 8: Total Factor Productivity, 1980-2003

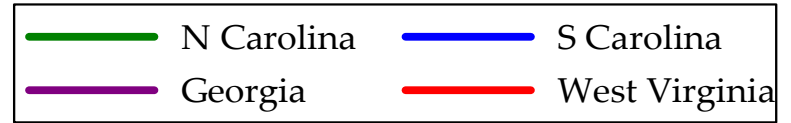
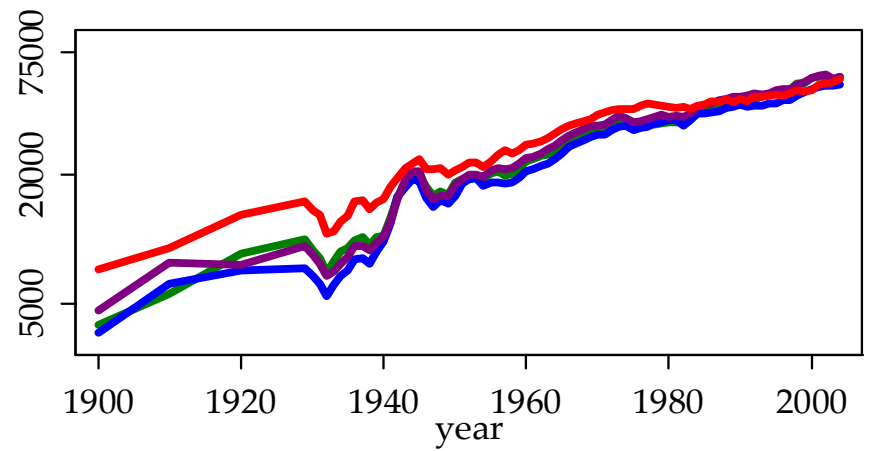
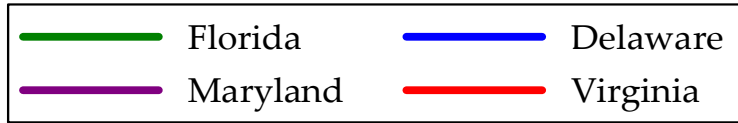
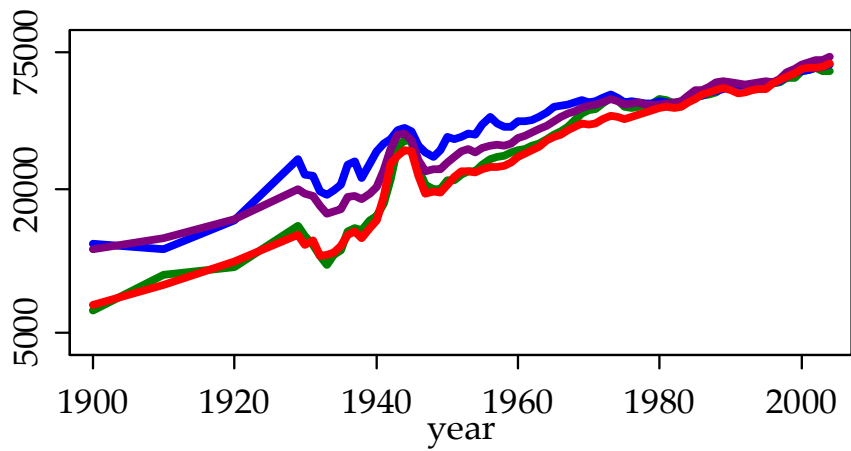
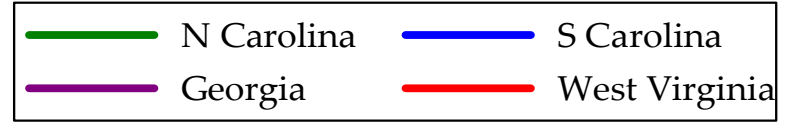
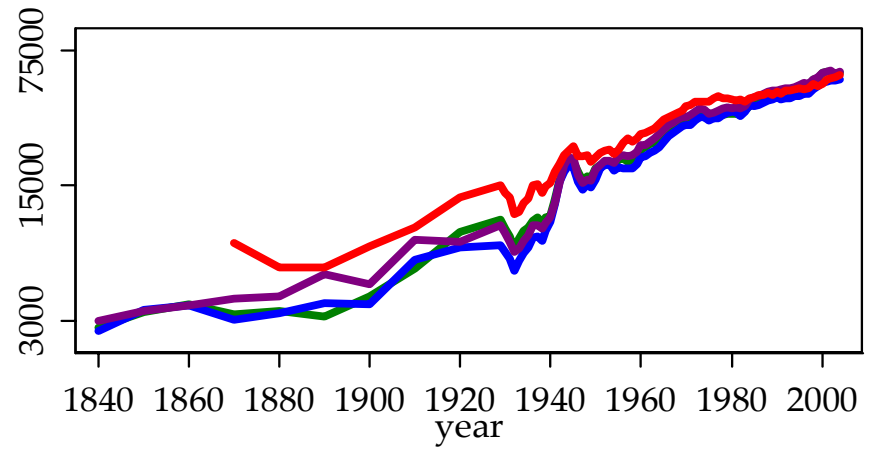
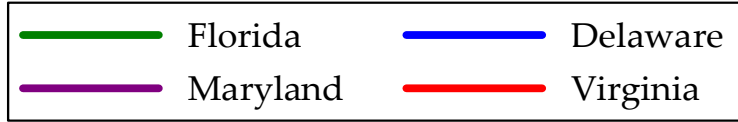
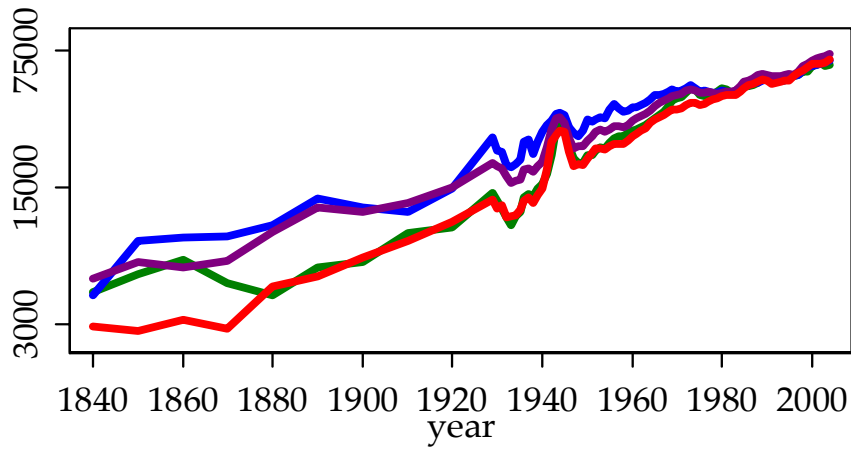


Figure 9: South Atlantic Real Output Per Worker, 1840-2004 & 1900-2004

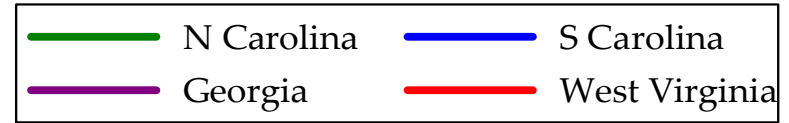
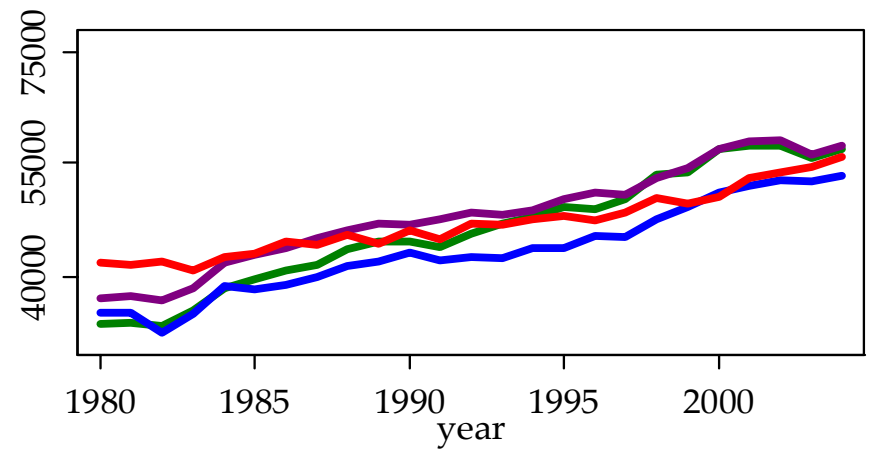
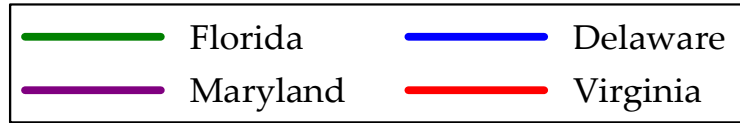
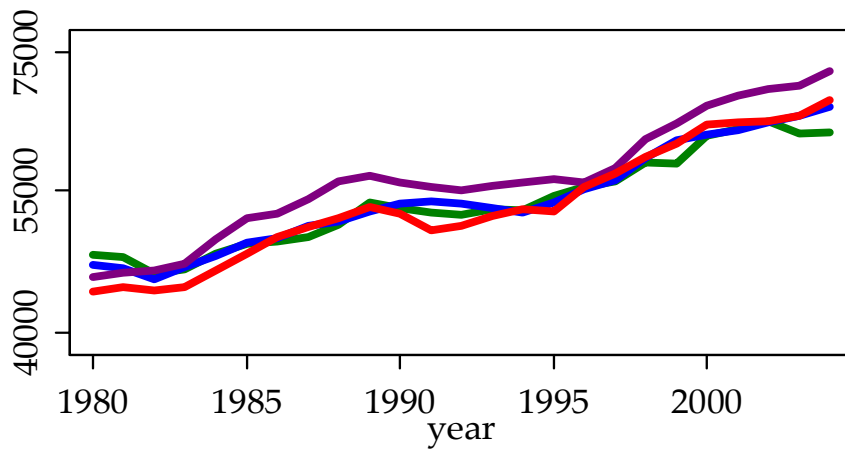
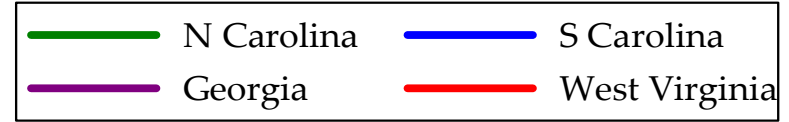
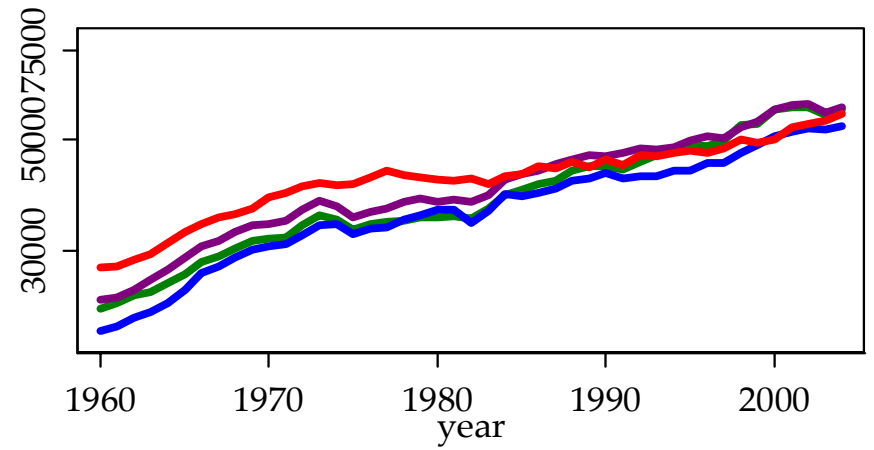
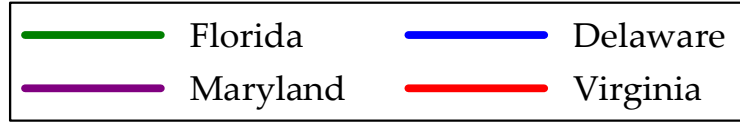
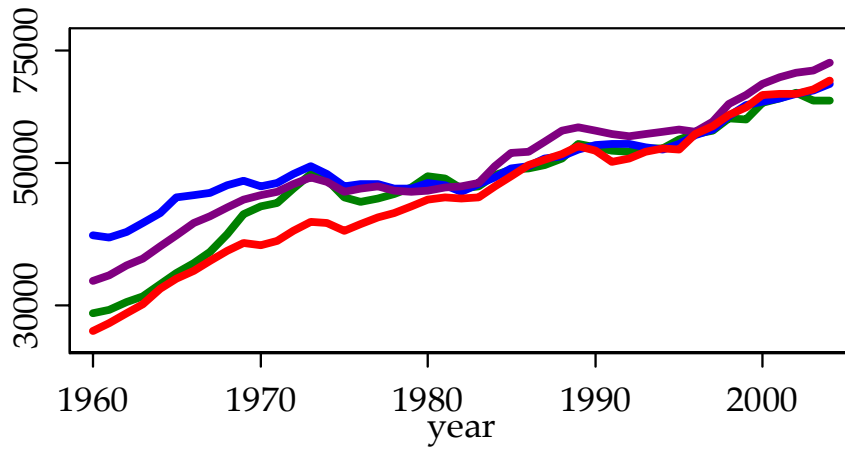


Figure 10: South Atlantic Real Output Per Worker, 1960-2004 & 1980-2004

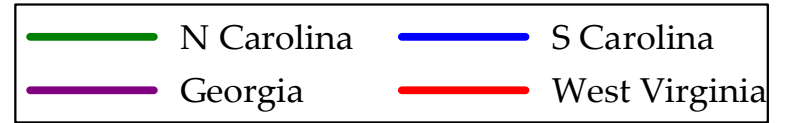
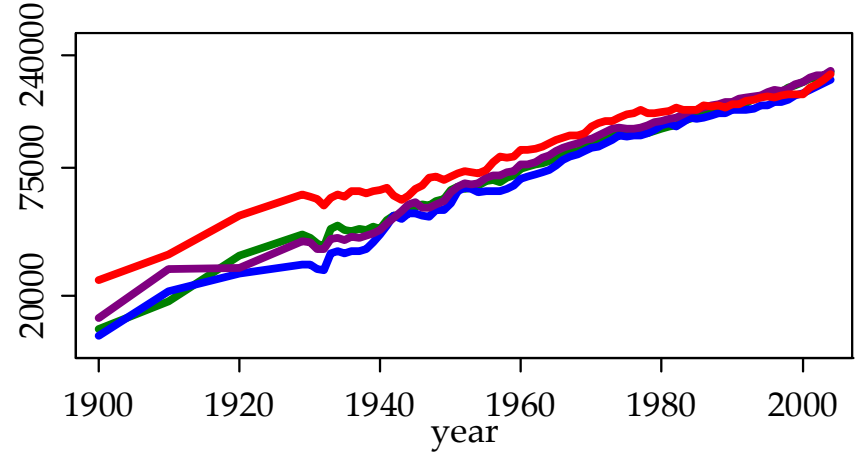
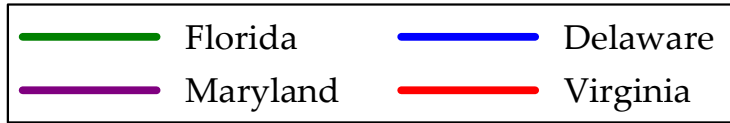
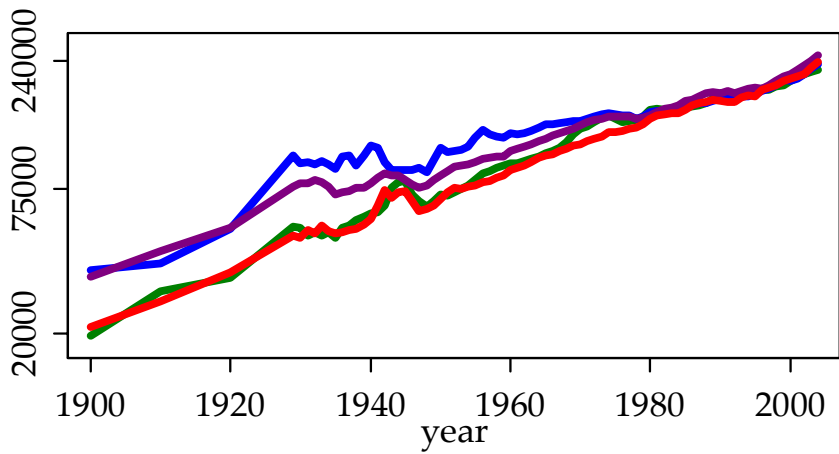
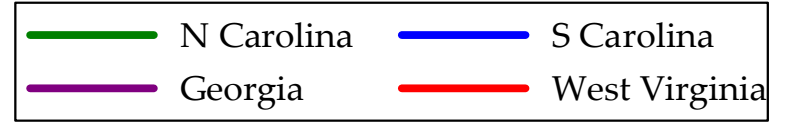
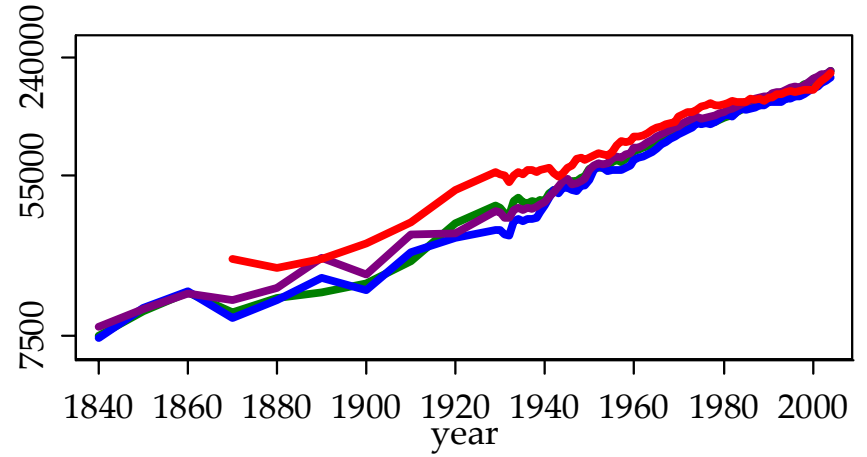
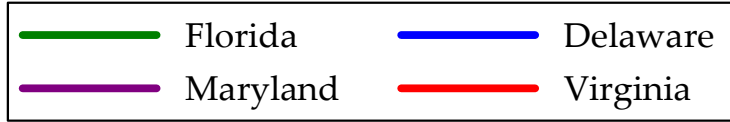
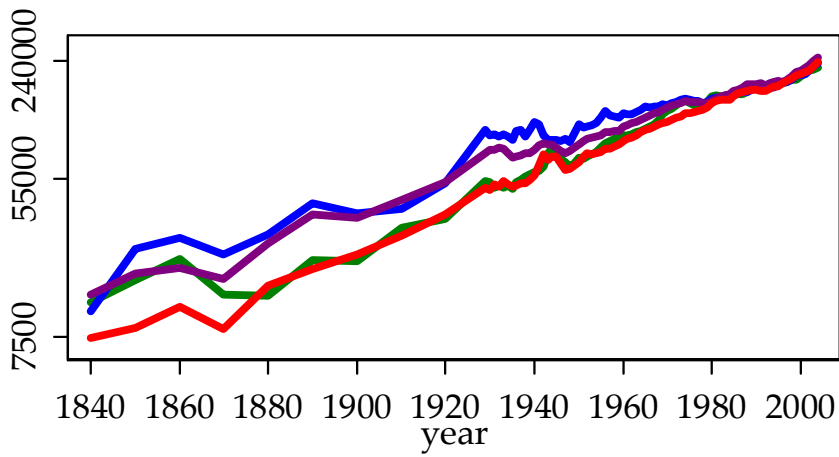


Figure 11: South Atlantic Physical Capital Per Worker, 1840-2004 & 1900-2004

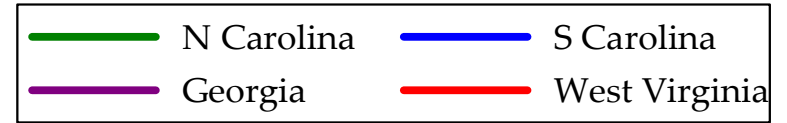
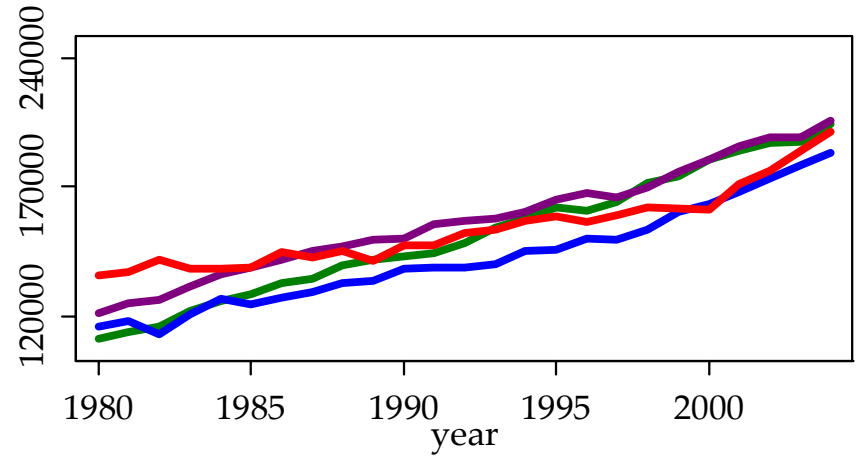
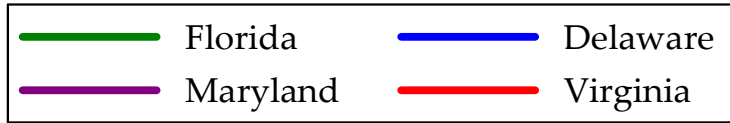
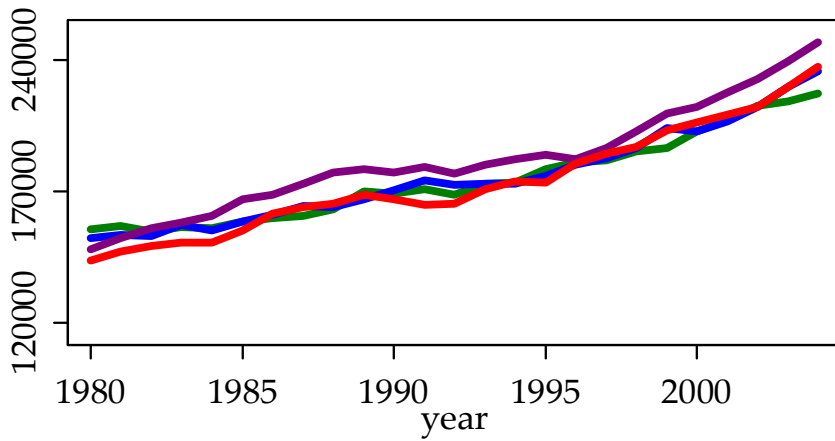
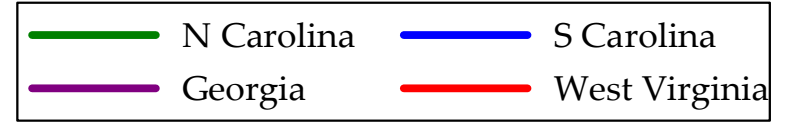
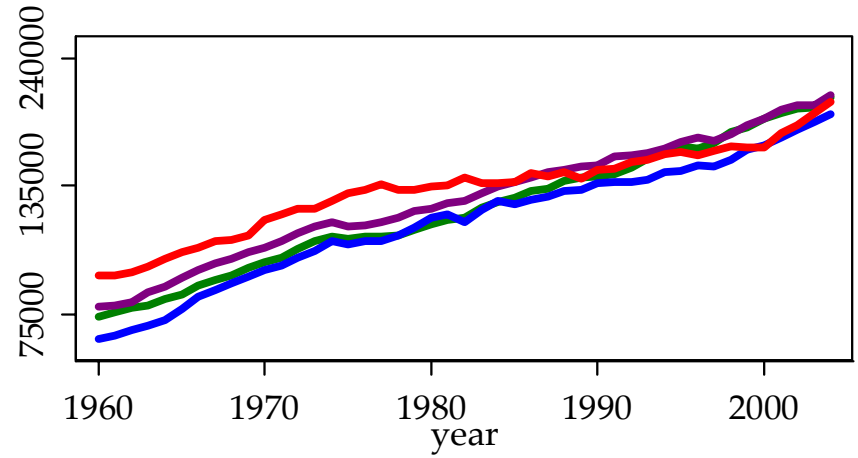
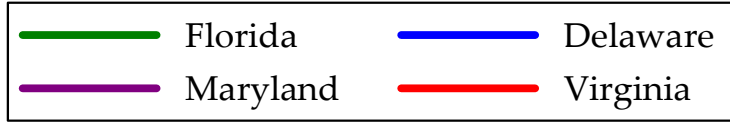
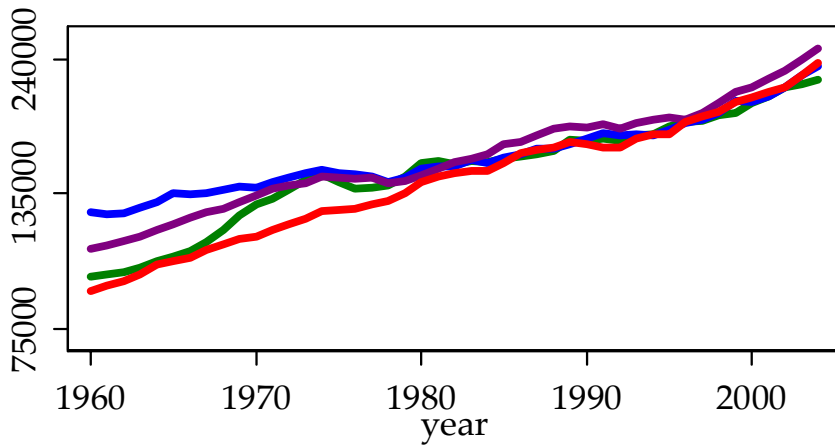


Figure 12: South Atlantic Physical Capital Per Worker, 1960-2004 & 1980-2004

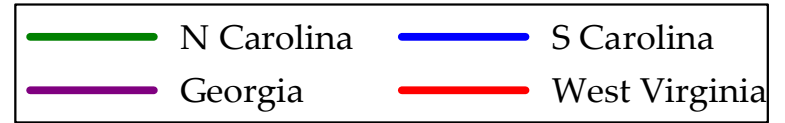
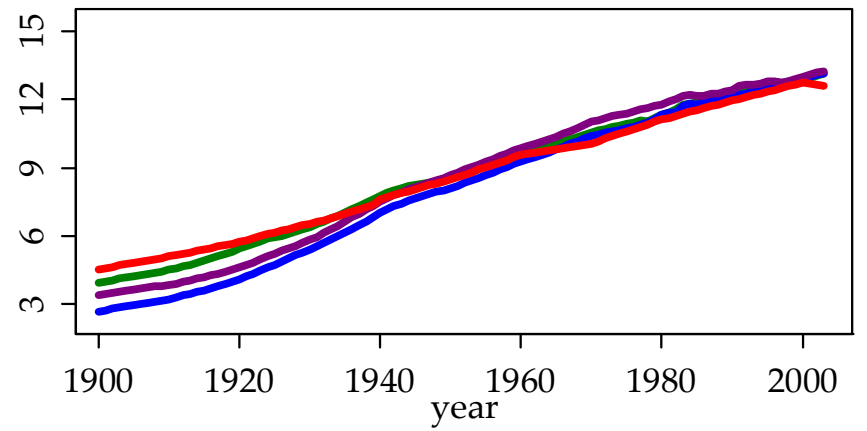
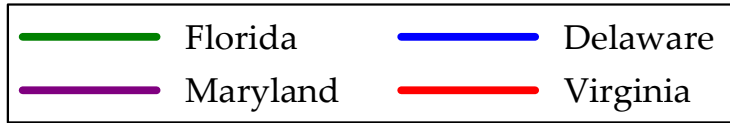
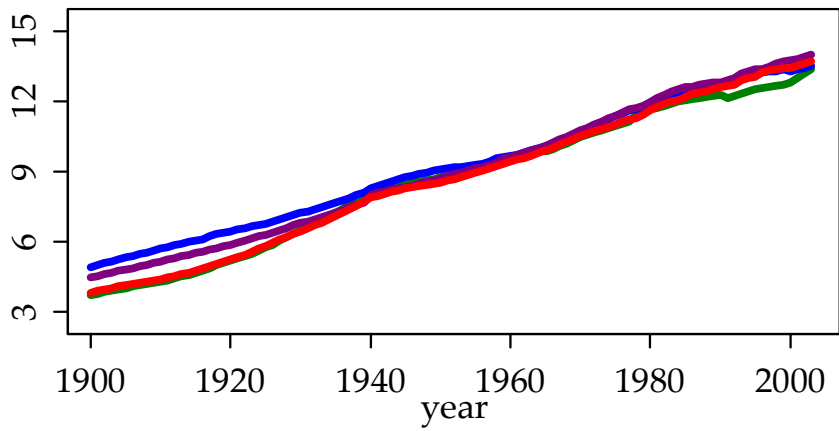
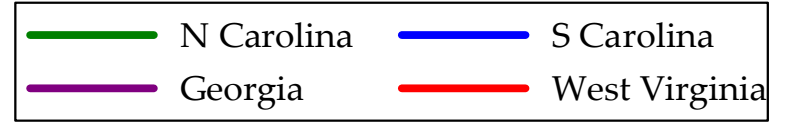
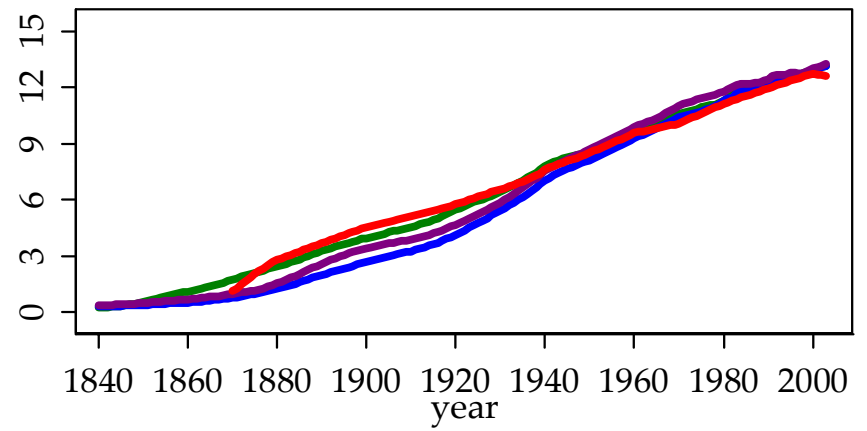
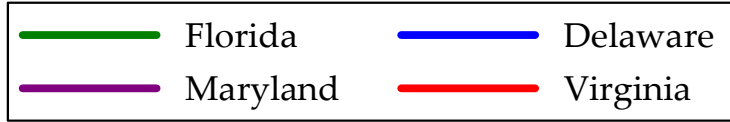
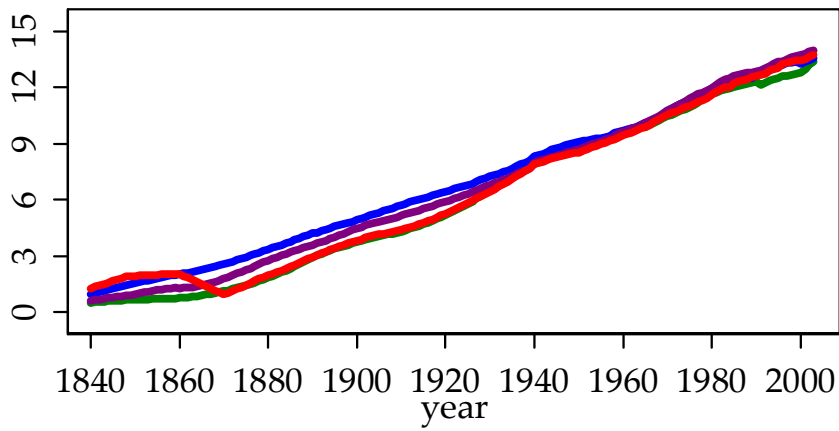


Figure 13: South Atlantic Years of Schooling, 1840-2003 & 1900-2003

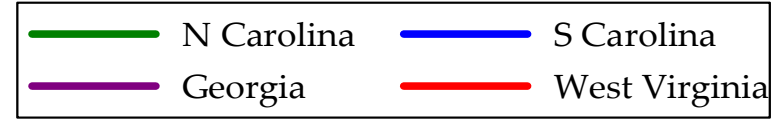
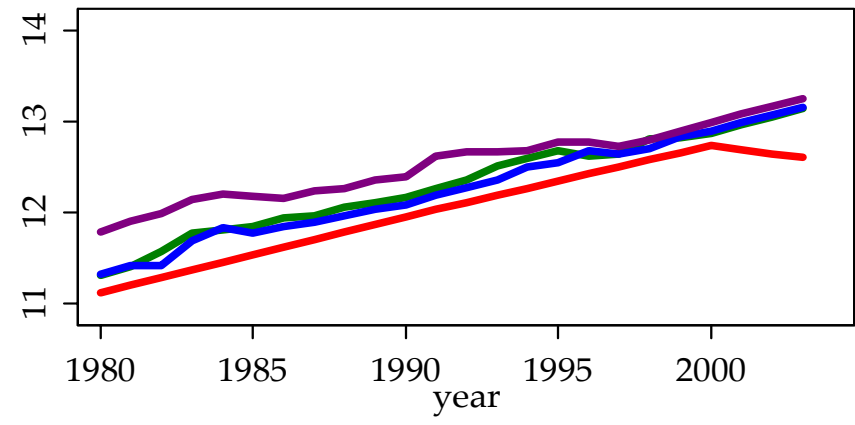
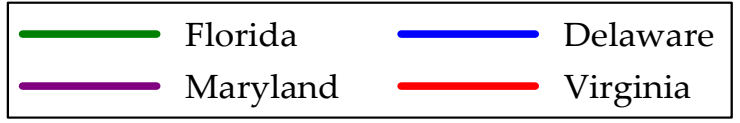
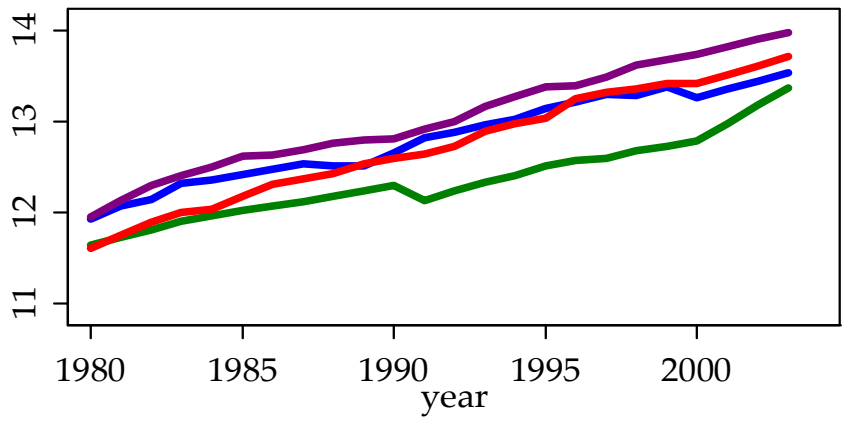
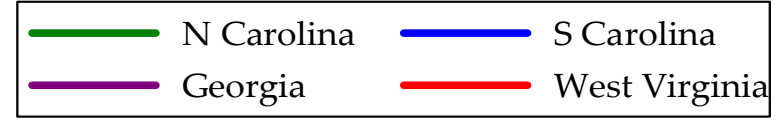
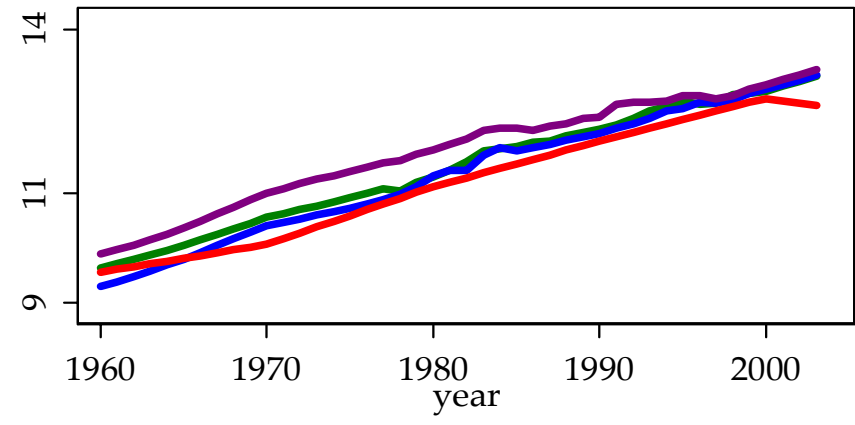
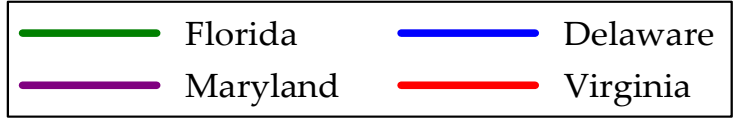
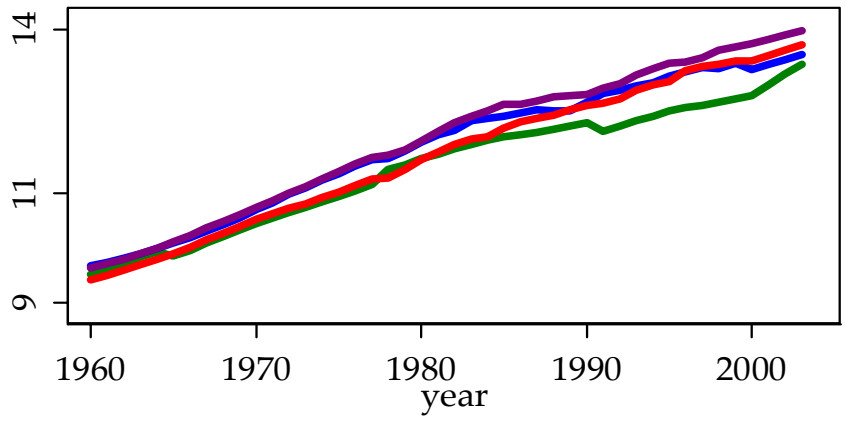


Figure 14: South Atlantic Years of Schooling, 1960-2003 & 1980-2003

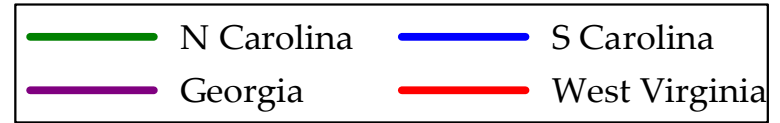
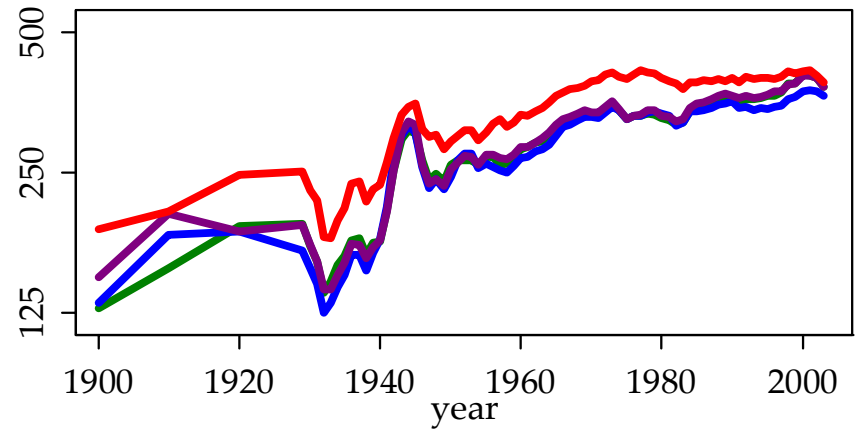
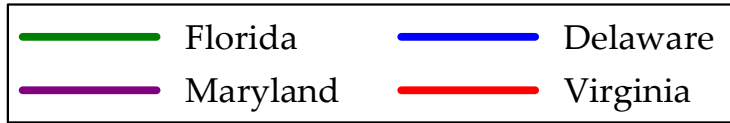
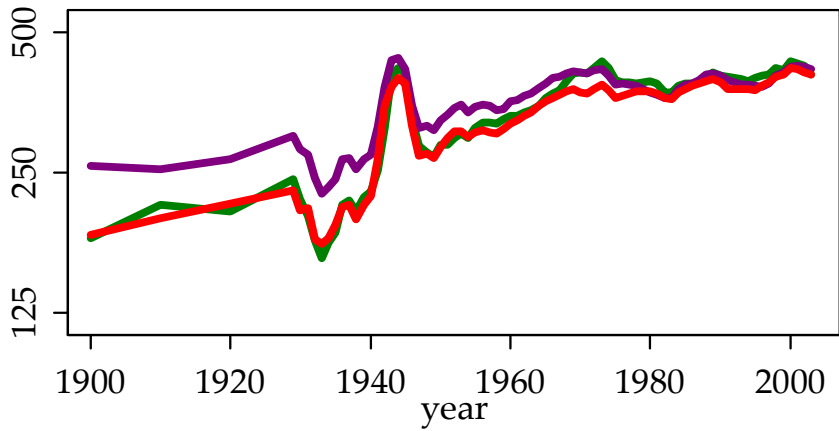
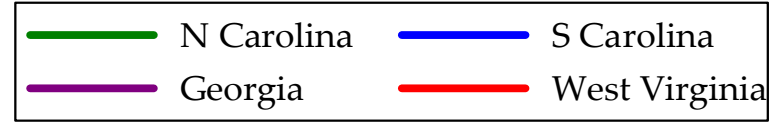
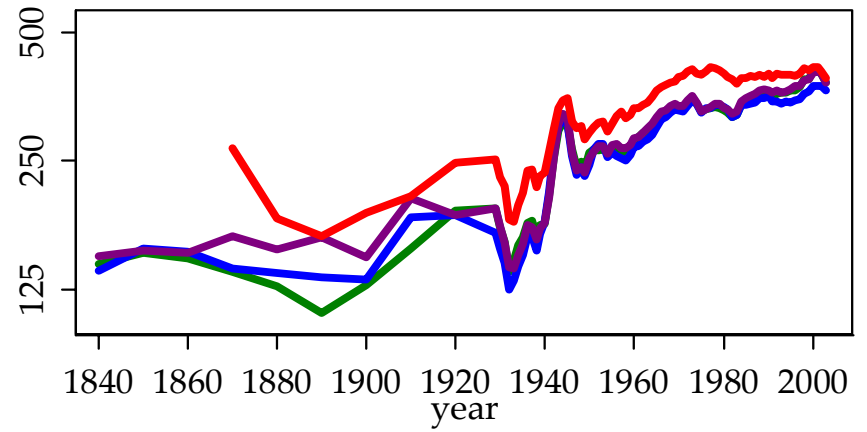
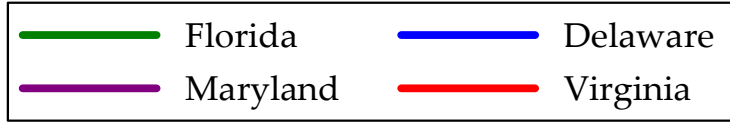
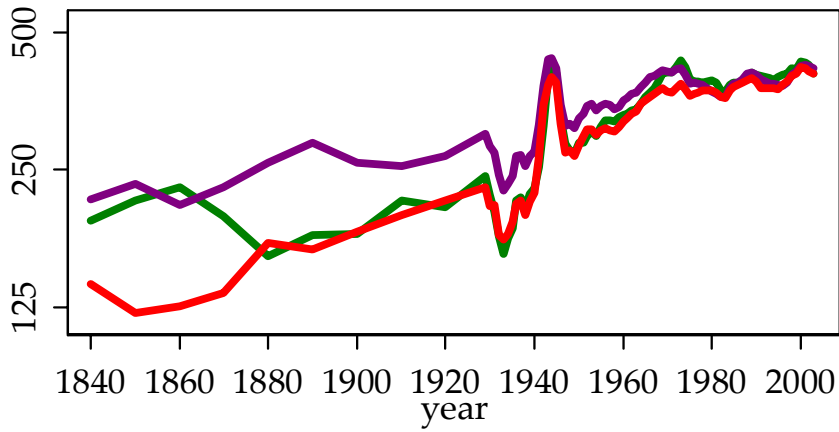


Figure 15: Total Factor Productivity South Atlantic, 1840-2003 & 1900-2003

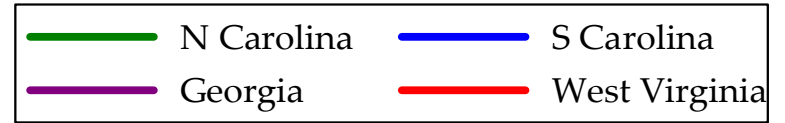
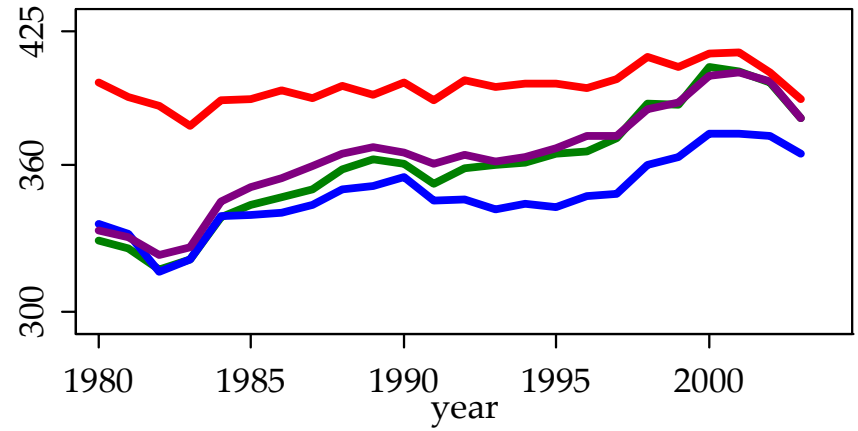
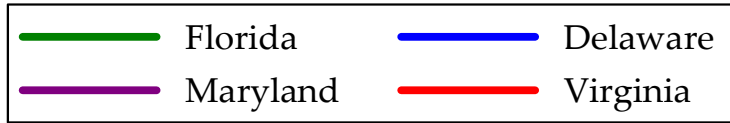
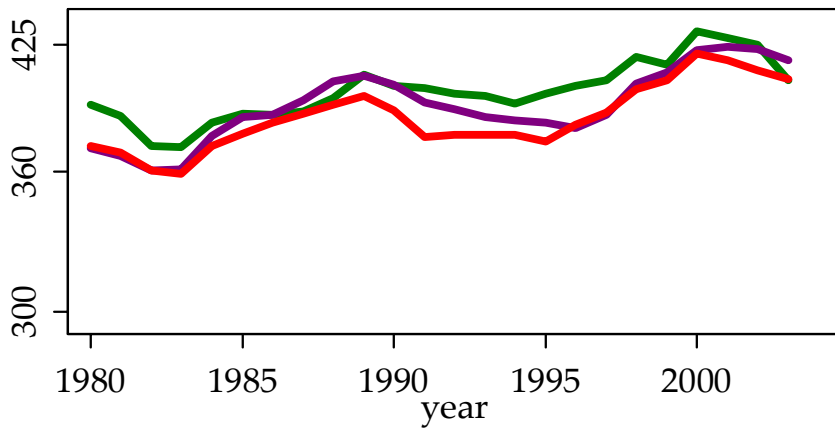
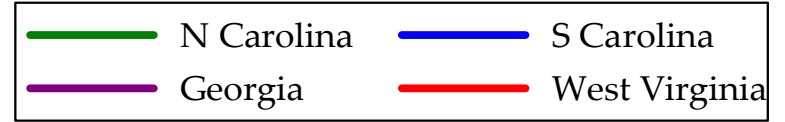
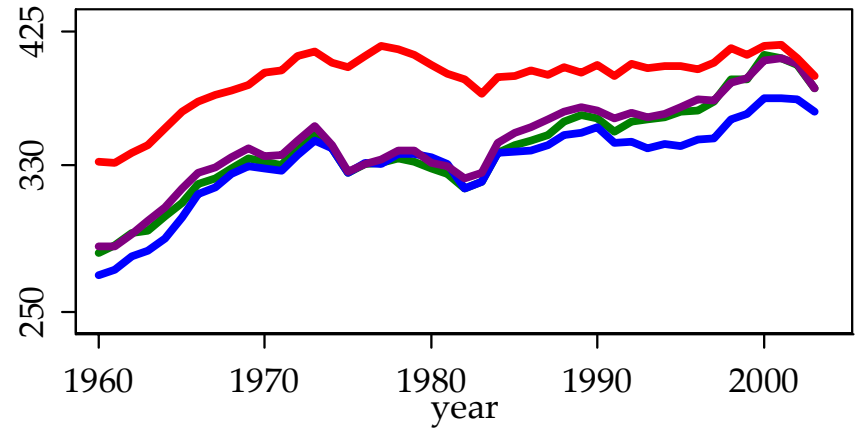
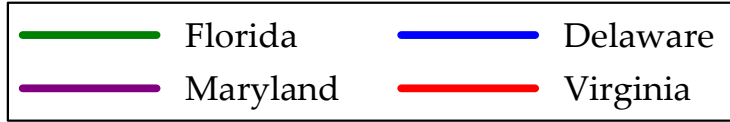
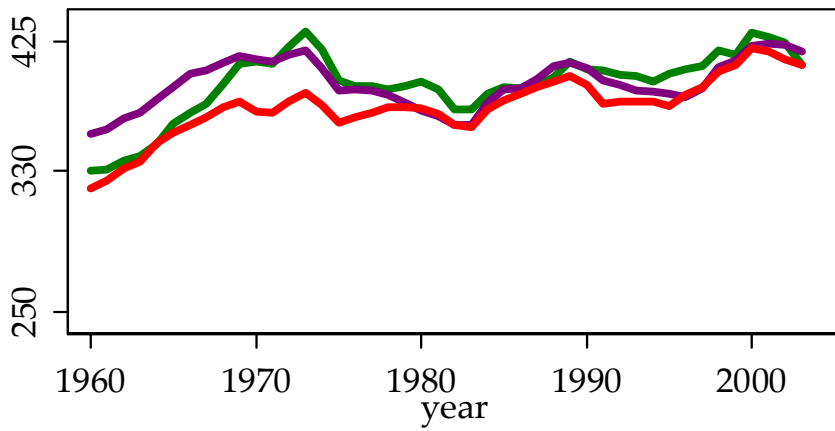


Figure 16: Total Factor Productivity South Atlantic, 1960-2003 & 1980-2003

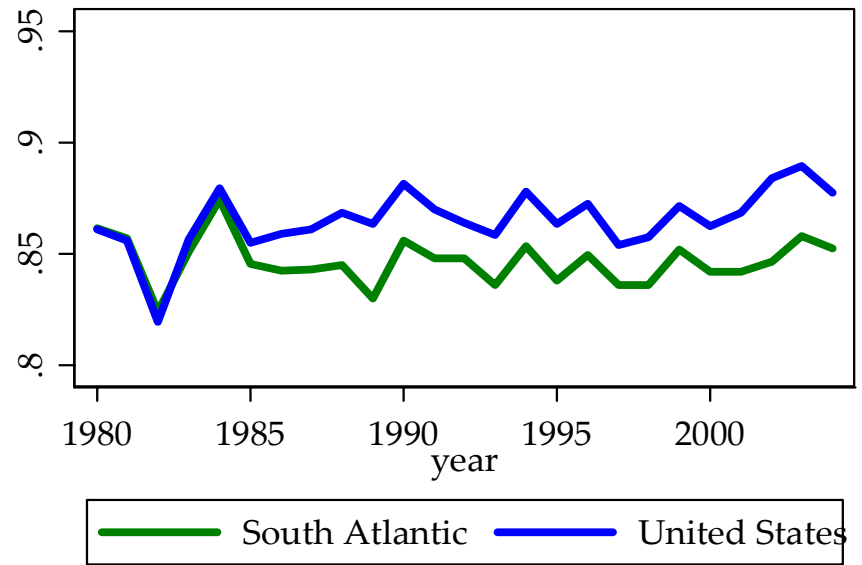
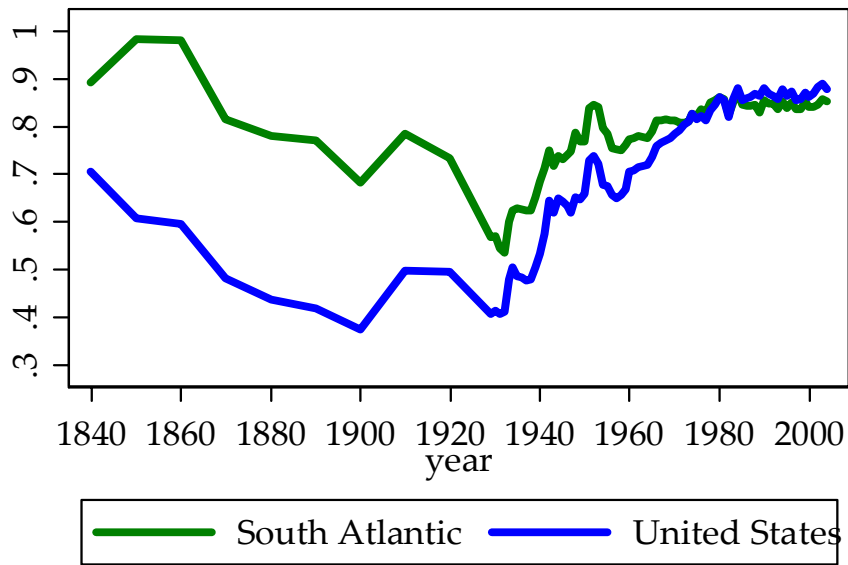
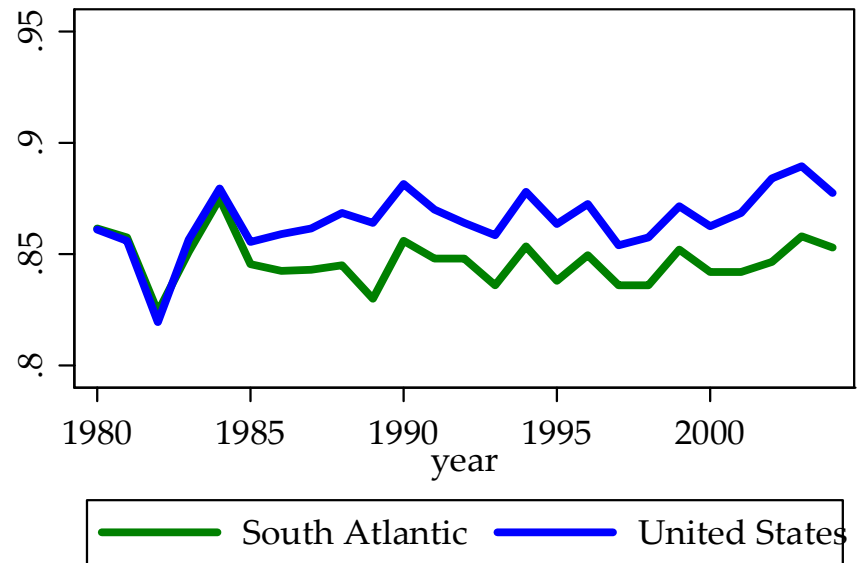
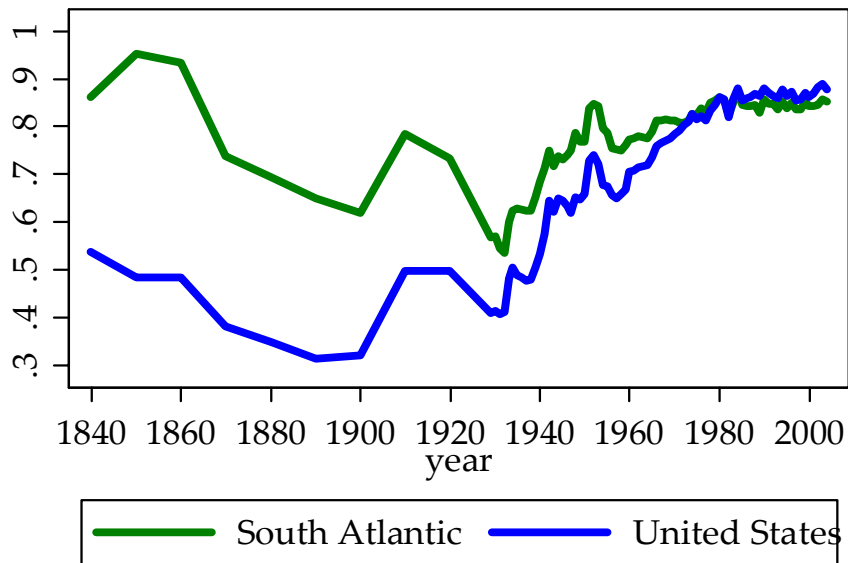
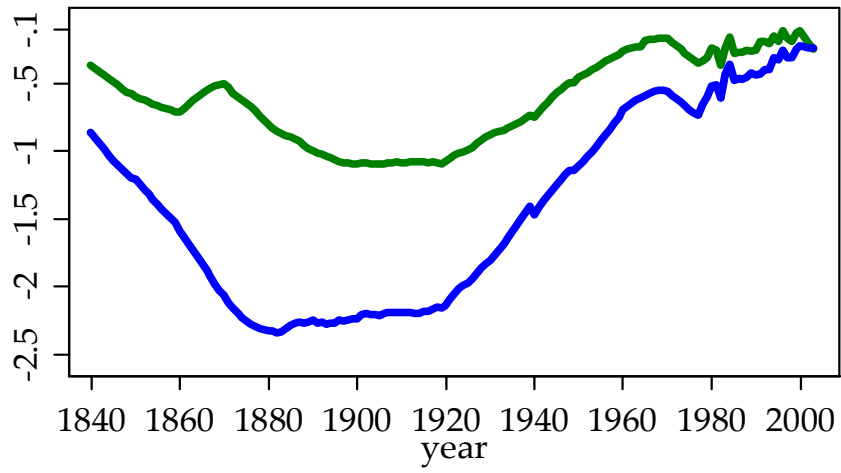
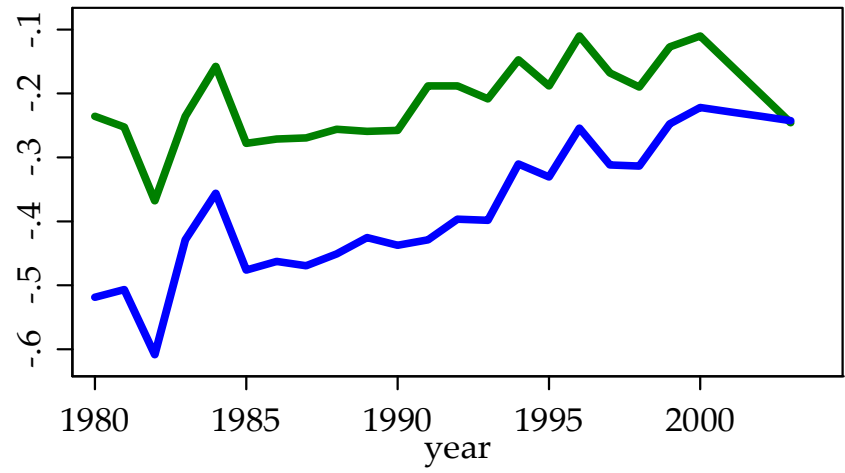


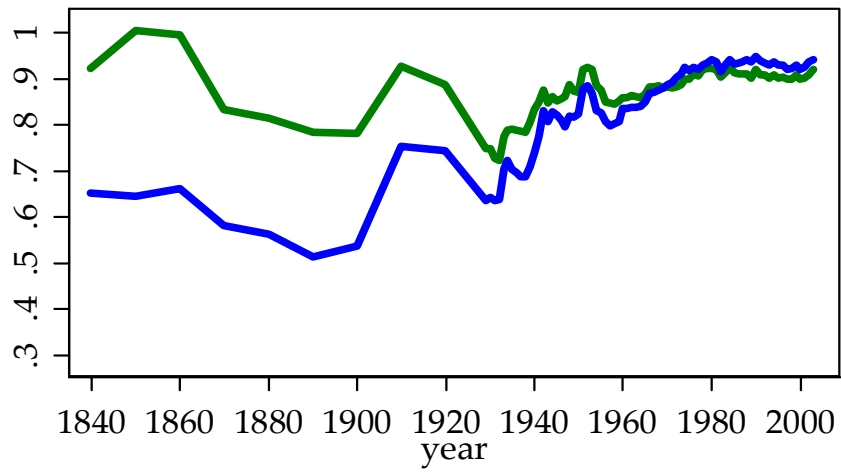
Figure 17: Relative South Carolina Output & Physical Capital Per Worker, 1840-2004 & 1980-2004



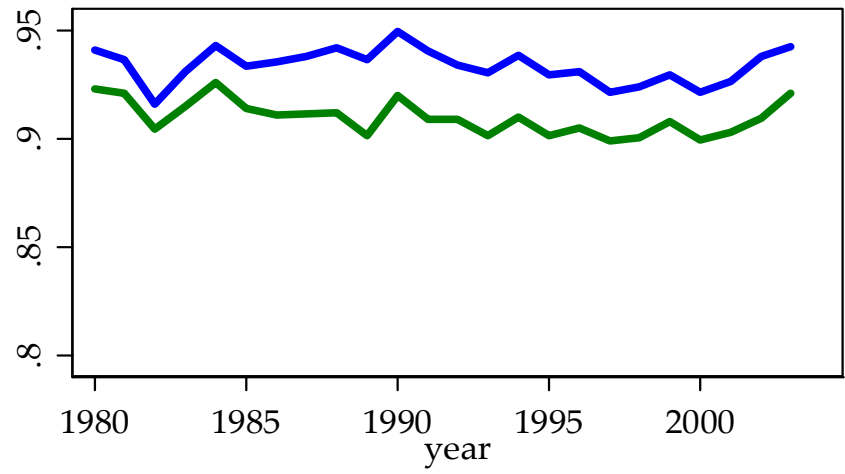
— South Atlantic — United States



— South Atlantic — United States



— South Atlantic — United States



— South Atlantic — United States

Figure 8: Relative South Carolina Schooling and Total Factor Productivity, 1840-2003 & 1980-2003

Table 1: Real Output Per Worker

Year	Delaware	Florida	Maryland	Virginia	Georgia	N Carolina	W Virginia	S Carolina
1840	4225	4401	5106	2931	3017	2776		2661
1860	8328	6374	5821	3144	3615	3642		3623
1880	9642	4195	8889	4692	4001	3365	5635	3297
1900	11,790	6219	11,188	6520	4669	4029	7295	3678
1920	14,794	9389	14,908	9946	7629	8644	13,069	7172
1940	28,797	15,942	20,325	14,755	10,270	10,406	15,536	9771
1950	33,215	21,806	25,986	20,869	18,012	18,424	20,980	16,012
1960	38,531	29,168	32,793	27,374	24,092	23,085	27,837	20,850
1970	46,019	42,832	44,537	37,280	33,940	31,756	38,419	30,736
1980	46,586	47,660	45,290	43,912	37,634	35,078	41,659	36,234
1985	48,951	48,834	51,771	47,765	42,594	39,684	42,666	38,613
1990	53,429	52,939	56,073	52,195	46,323	44,157	45,510	42,788
1995	53,529	54,354	56,461	52,498	49,634	48,587	47,448	43,397
2000	62,340	62,202	66,489	63,797	57,091	57,163	49,993	50,693
2004	66,362	62,681	71,775	67,322	57,756	57,239	56,008	52,989

Table 2: Physical Capital Per Worker

Year	Delaware	Florida	Maryland	Virginia	Georgia	N Carolina	W Virginia	S Carolina
1840	10,415	11,648	12,856	7433	8404	7511		7280
1860	26,073	20,039	17,912	11,006	12,668	12,838		13,025
1880	27,335	12,721	24,324	14,411	13,544	11,931	17,317	11,708
1900	35,781	19,607	33,462	21,314	15,990	14,281	23,520	13,282
1920	52,146	33,093	52,545	35,055	26,890	30,468	46,065	25,280
1940	111,196	59,819	78,483	56,975	39,657	40,182	59,989	37,729
1950	108,148	71,000	84,609	67,950	58,648	59,989	68,309	52,135
1960	124,326	94,114	105,811	88,326	77,735	74,486	89,819	67,277
1970	137,912	128,362	133,472	111,724	101,713	95,169	115,138	92,113
1980	150,034	153,492	145,858	141,420	121,204	112,972	134,166	116,693
1985	157,115	156,737	166,164	153,307	136,709	127,370	136,940	123,933
1990	170,325	168,762	178,752	166,389	147,672	140,767	145,077	136,401
1995	177,201	179,934	186,907	173,789	164,309	160,843	157,071	143,662
2000	199,342	198,902	212,610	204,002	182,557	182,789	159860	162,099
2003	233,035	220,111	252,045	236,406	202,816	201,000	196,675	186,076

Table 3: Years of Schooling

Year	Delaware	Florida	Maryland	Virginia	Georgia	N Carolina	W Virginia	S Carolina
1840	0.9	0.5	0.6	1.3	0.3	0.2		0.3
1860	2.0	0.7	1.3	2.0	0.7	1.1		0.5
1880	3.3	1.8	2.8	1.9	1.5	2.4	2.8	1.2
1900	4.9	3.7	4.5	3.8	3.4	4.0	4.5	2.7
1920	6.4	5.2	5.9	5.2	4.6	5.5	5.7	4.1
1940	8.3	8.0	8.0	7.9	7.5	7.8	7.6	7.0
1950	9.1	8.7	8.7	8.5	8.7	8.5	8.2	8.1
1960	9.7	9.5	9.6	9.4	9.9	9.6	9.0	9.3
1970	10.7	10.4	10.7	10.5	11.0	10.6	10.0	10.4
1980	11.9	11.6	11.9	11.6	11.8	11.3	10.2	11.3
1985	12.4	12.0	12.6	12.2	12.2	11.9	10.7	11.8
1990	12.7	12.3	12.8	12.6	12.4	12.2	11.1	12.1
1995	13.1	12.5	13.4	13.0	12.8	12.7	11.3	12.5
2000	13.3	12.8	13.7	13.4	13.0	12.9	11.4	12.9
2003	13.5	13.4	14.0	13.7	13.3	13.1	12.6	13.2